

NEWSLETTER

DECEMBER 2008



*On behalf of the entire team,
in this Christmas and New Year season
we sincerely wish you and yours
all possible happiness, good health
and prosperous days ahead!*

Our opening hours during the festive season will be as follows :

24 December	open till noon
25 and 26 December	closed
29 and 30 December	open (closure at 5.30 pm on the 30th)
From 31 December to 2 January	closed

We shall be delighted to see you again on 5 January from 8.30.



AN EXCLUSIVE TRIP IN RAJASTHAN FROM 7 TO 21 MARCH 2009

I am still impressed by the special appeal of a visit to this area last May and I would like you to be able to share the same unforgettable experience. In association with Horizons Nouveaux (New Horizons), a tour operator and specialist in this destination with which we have cooperated for several years, we have designed this private programme for you consisting of the most beautiful "Pearls of Rajasthan". You will stay in some of the world's finest hotels and travel in the company of a French-speaking guide throughout the entire visit. This programme has been intentionally prepared for a restricted number of guests to ensure that it retains its private and personalized characters. Please contact me if you need any further information. With best wishes.

Yvan Vasina (Director of Delta Voyages).

[LES PERLES DU RAJASTHAN](#)

[REGISTRATION FORM](#)



AVAILABLE NOW!

Delta Voyages is pleased to announce the opening of a new section on its internet site : www.delta-voyages.ch

In Switzerland and in France, as a family or with friends, come and enjoy the warmth of a cheering wood fire... It is snowing outside, and you can expect first-class skiing tomorrow...

[More information about DELTA CHALETS](#)

EMIRATES NEWS

The Company now has a new lounge in Zurich, a new Airbus A 380, and a new Terminal 3 in Dubai...

[More information about EMIRATES](#)



NEWSLETTER

DECEMBER 2008



BERNE-PARIS ONLY FROM 19 JANUARY 2009 WITH AIR FRANCE

The schedules for flights operated by a 48-seater ATR 42-500 have been designed to enable you to benefit from a full working day in the French capital and also to allow the best possible onward flights at Orly airport to 24 destinations in the rest of France and to those in the West Indies and the Indian Ocean.

Day	Leave Berne	Arrive Paris	Leave Paris	Arrive Berne
1 2 3 4 5 6 -	06h40	07h55	08h40	10h20
1 2 3 4 5 - 7	17h00	18h15	18h50	20h20

COINTRIN, SCHENGEN AREA AND FRENCH SECTOR



Switzerland will form part of the Schengen area from this month, but the Federal Council has decided to apply the Schengen measures to the two airports of Zurich-Kloten and Geneva-Cointrin only from 29 March 2009, with the summer timetable.

[More information about AIRPORT, SCHENGEN AREA](#)



CHILE, THE DESTINATION OF THE MONTH

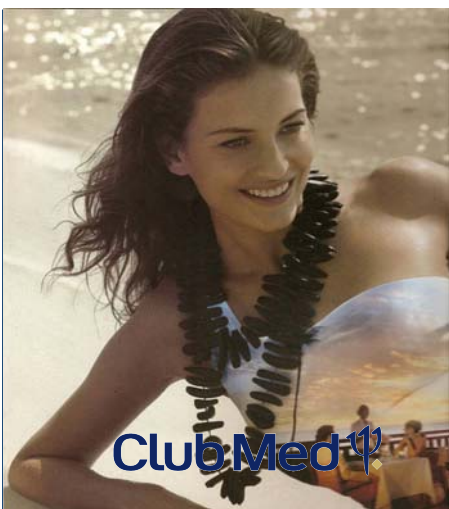
In association with



Discover the magnificent sights and experiences of this country of a thousand faces, from icebergs floating in the fjords of southern Chile to the arid desert of Atacama, and travel by way of virgin forests, steppes, lagoons and even snow-capped volcanoes as you pass from one extreme to the other.

[More information about CHILE](#)

CLUB MED, THE WINTER PROGRAMME COVERS OTHER VILLAGES AND OTHER DATES



WINTER SUN, two new villages are taking part : Cherating (Malaysia) & Phuket (Thailand)

CHF 280.- reduction per person (from age 4) on the "holiday in the sun"*, for departures from December 2008 to end April 2009. Reservations up to 20 December 2008.

SNOW, additional stay dates in Val Thorens, La Plagne and Cervinia.

CHF 160.- reduction per person (from age 4) on the stay for departures from December 2008 to end April 2009. Reservations until 3 January 2009.

*Contact us for details of other villages. Offers are subject to certain conditions.